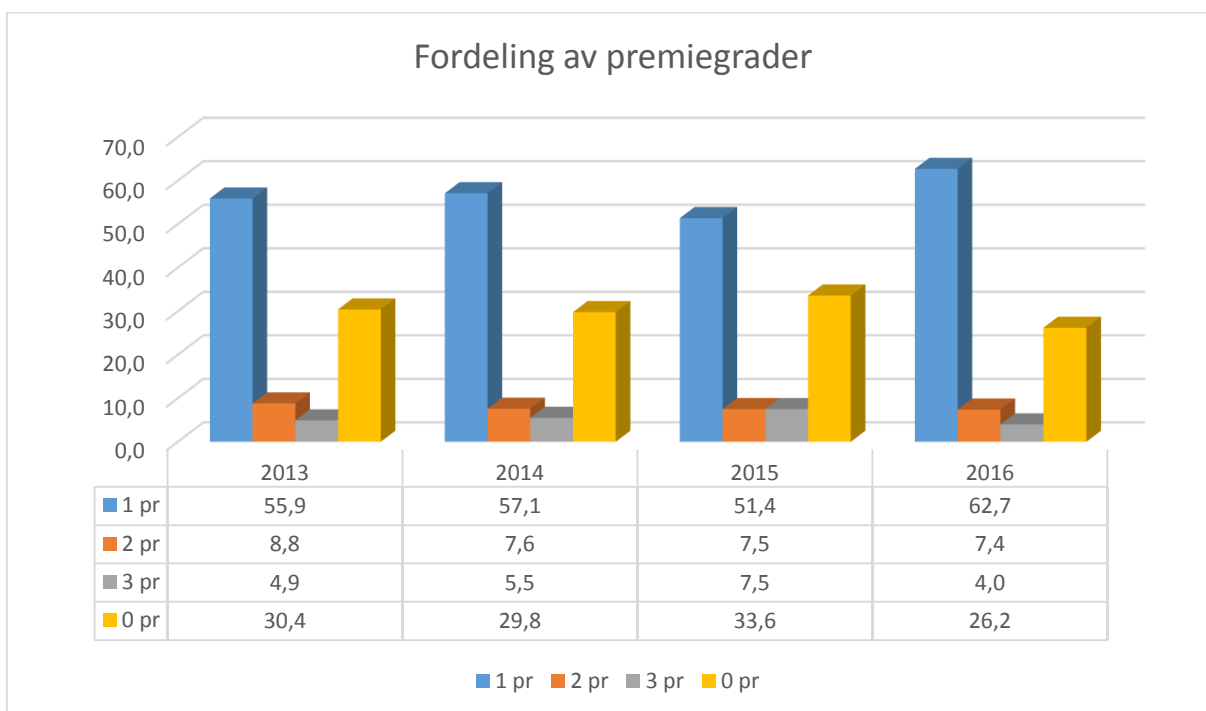
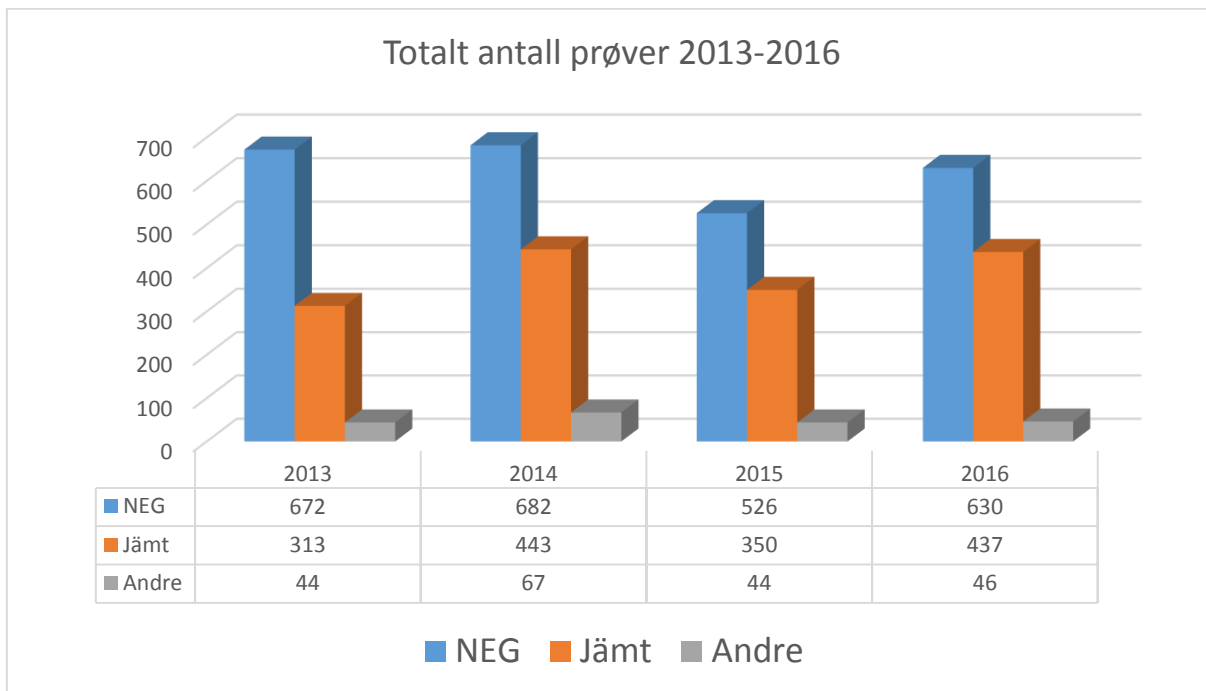
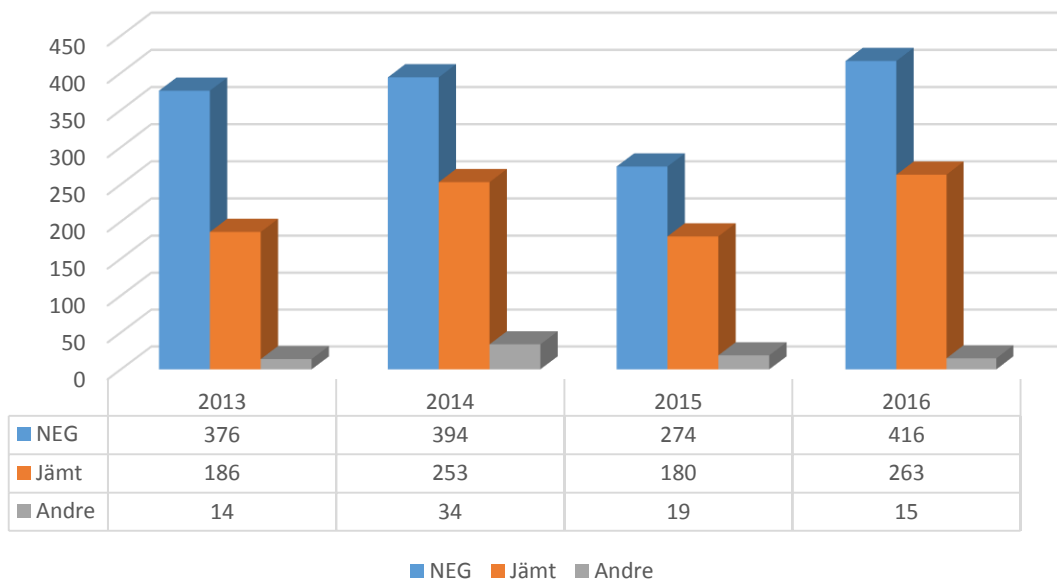




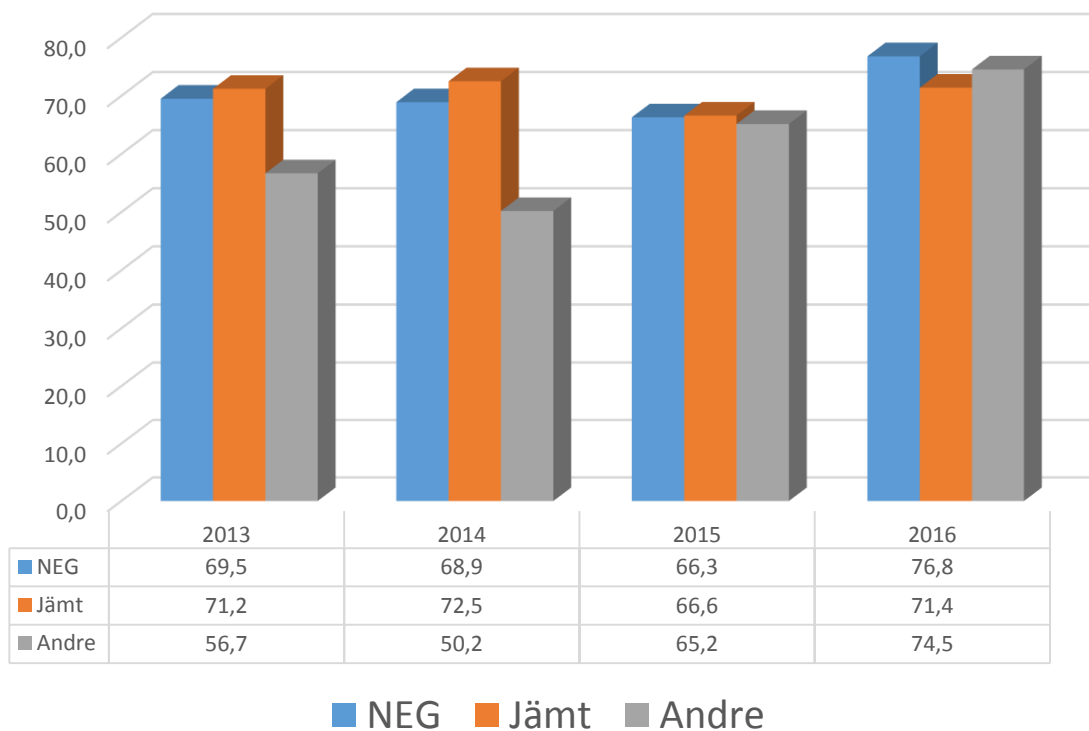
LØSHUNDPRØVER 2013- 2016 NEKF



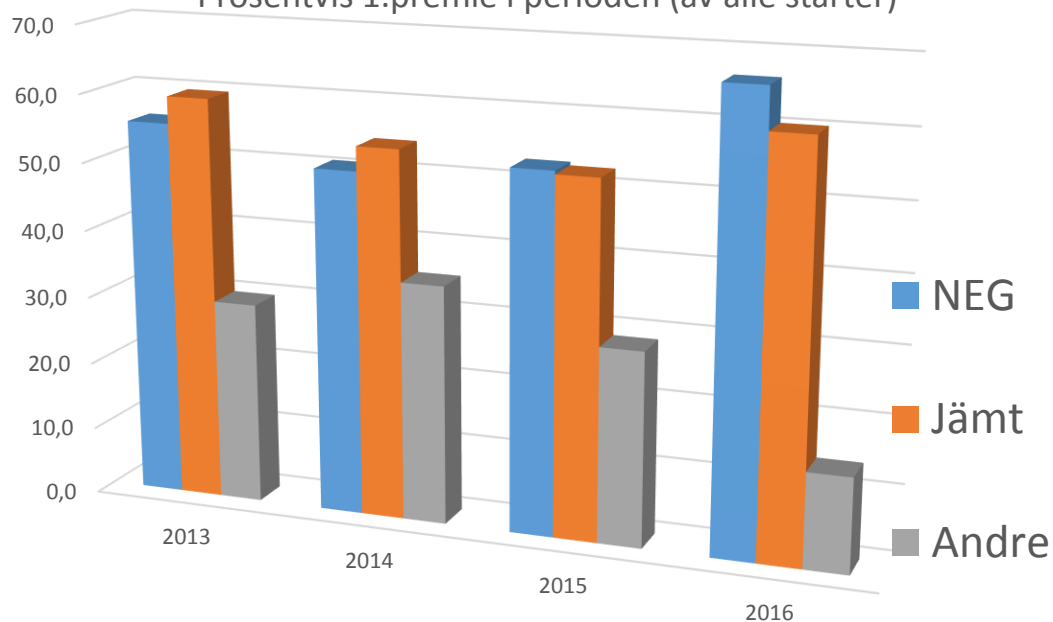
Antall 1. premier i perioden 2013-2016 av totalt starterfordelt på rase



Total premiering av antall prøver i %

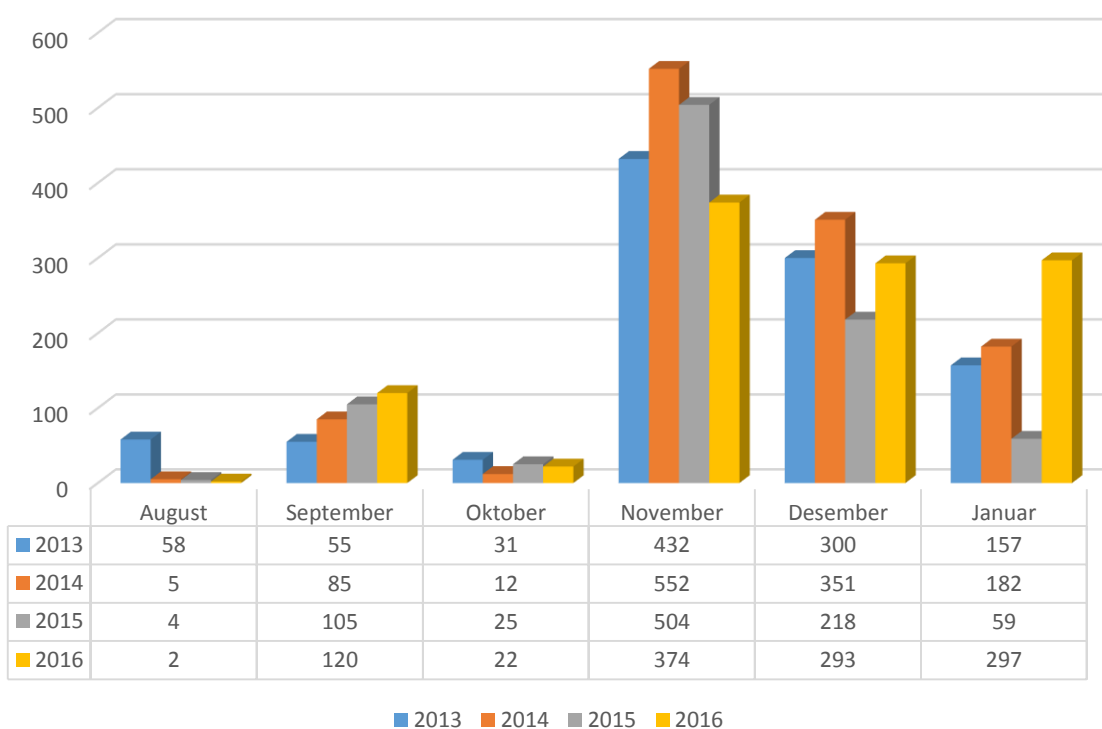


Prosentvis 1.premie i perioden (av alle starter)

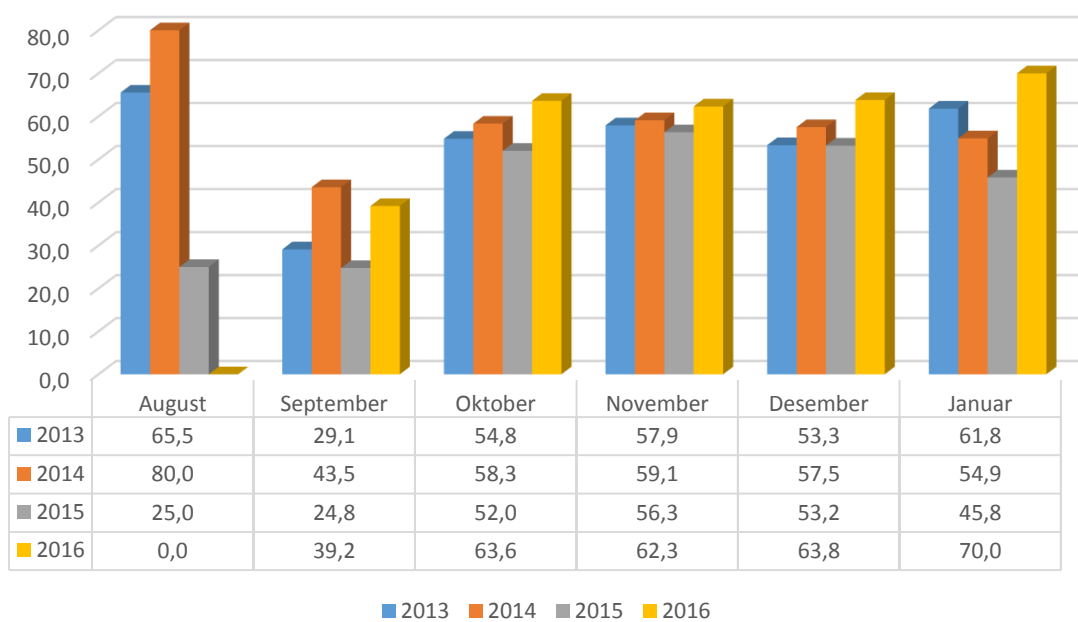


	2013	2014	2015	2016
■ NEG	55,6	50,7	52,9	66,3
■ Jämt	59,6	54,3	52,4	60,2
■ Andre	29,8	35,3	28,7	14,1

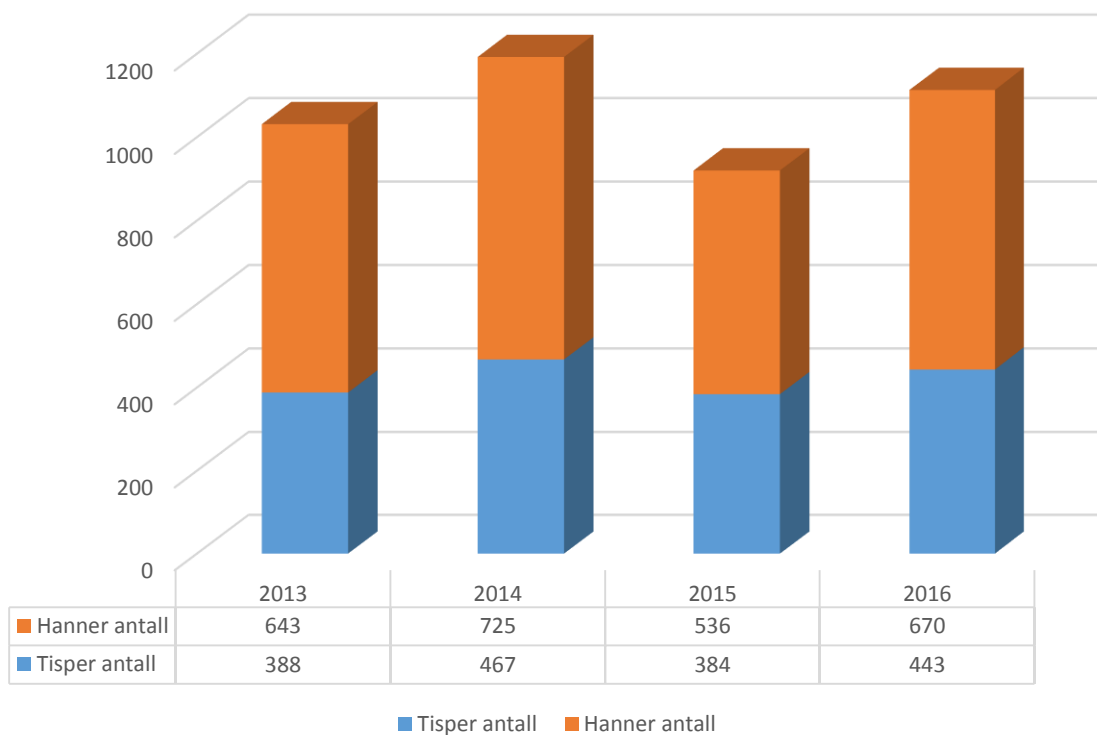
Prøver pr. mnd. i perioden 2013-2016



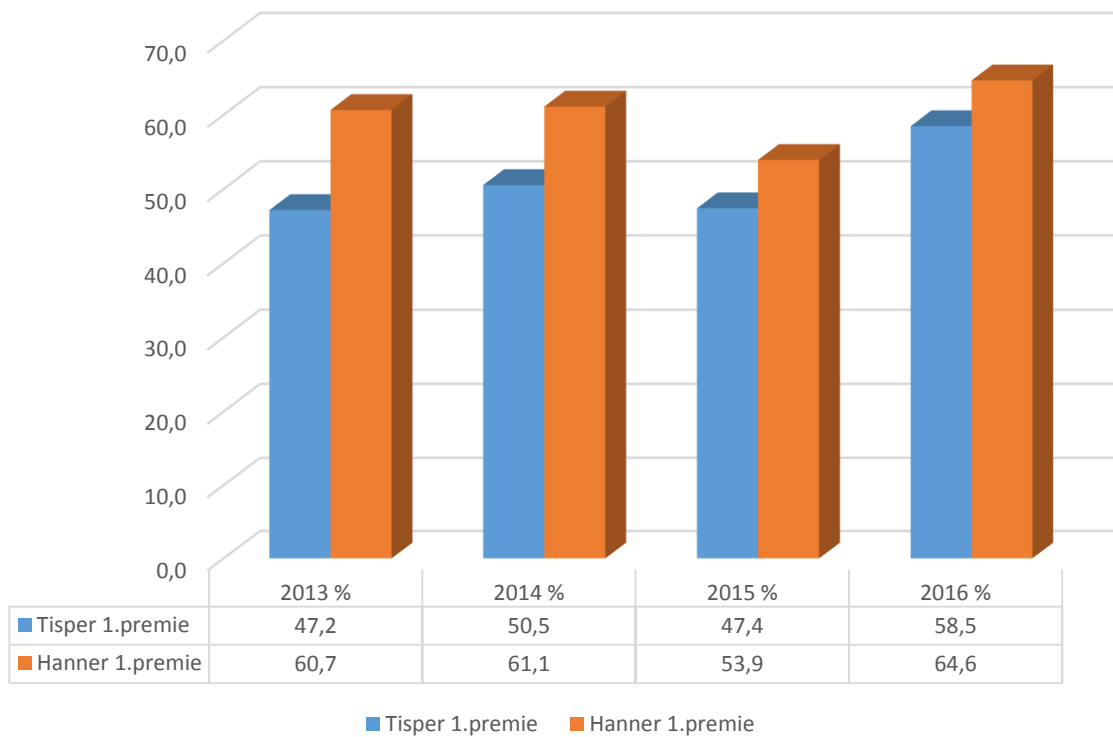
1-premie i % av alle prøver - fordelt på mnd.



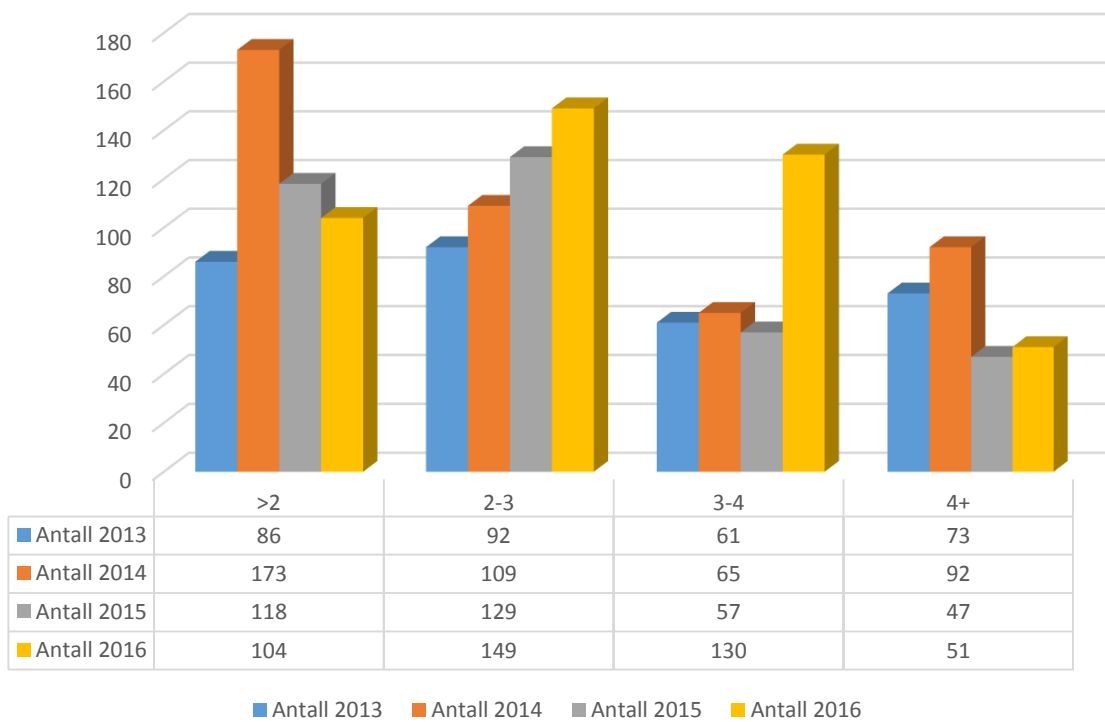
Antall prøvestarter Tisper-Hanner



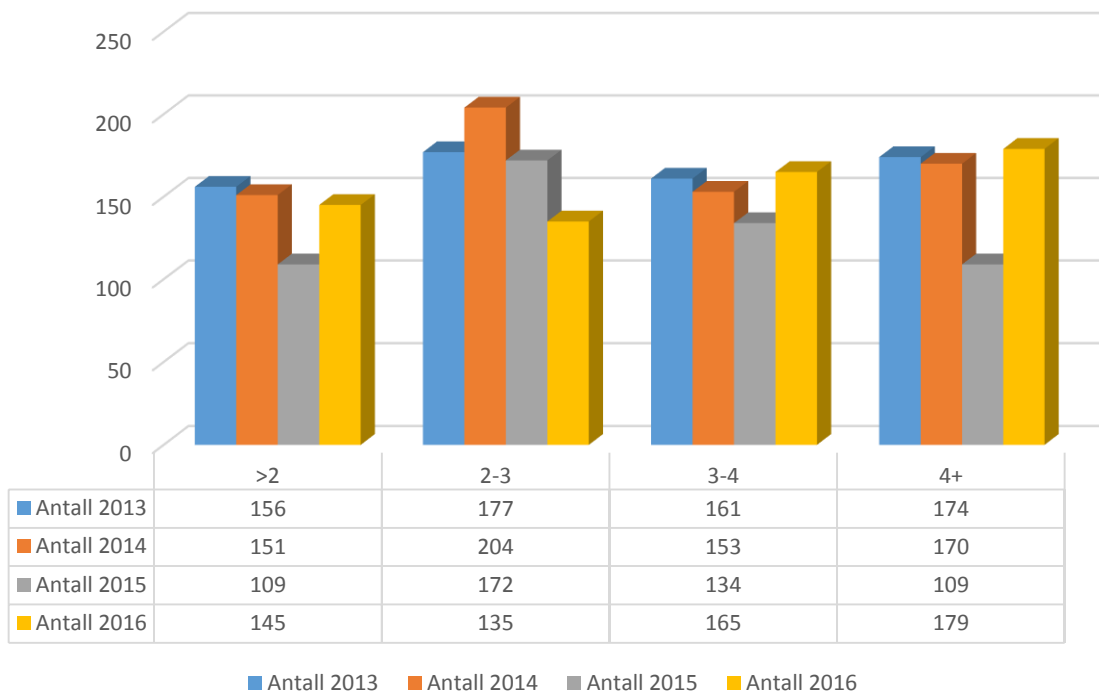
% 1. premie av alle starter fordelt på tisper og hann



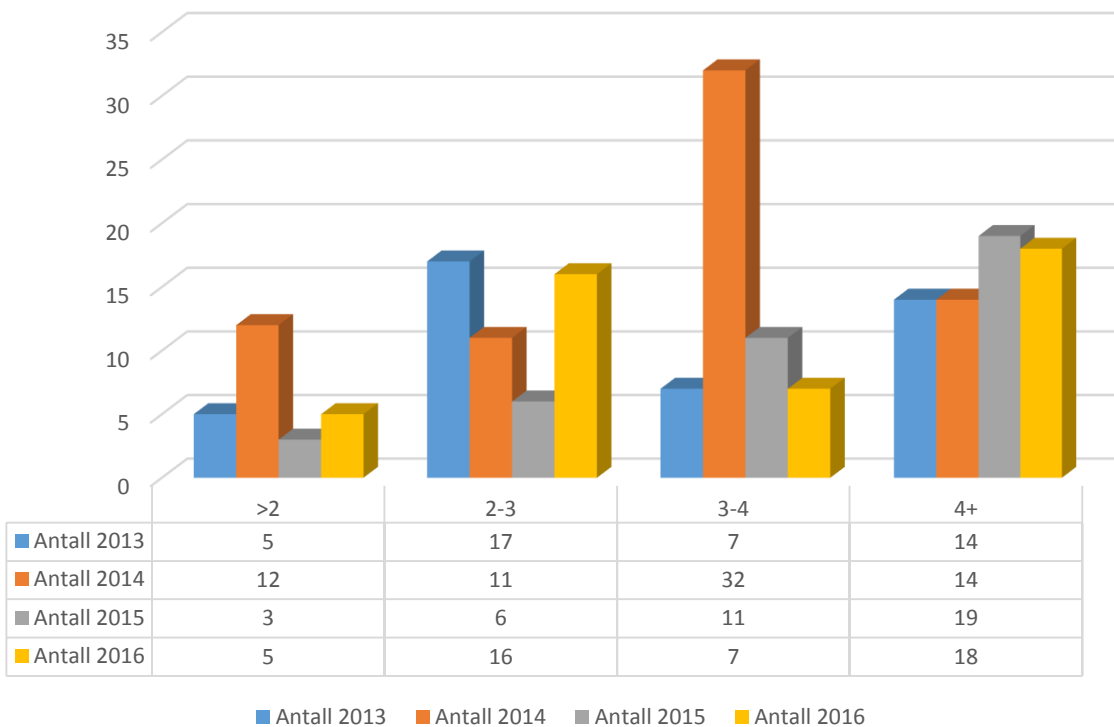
Antall starter fordelt på alder ved prøvestart Jämthund



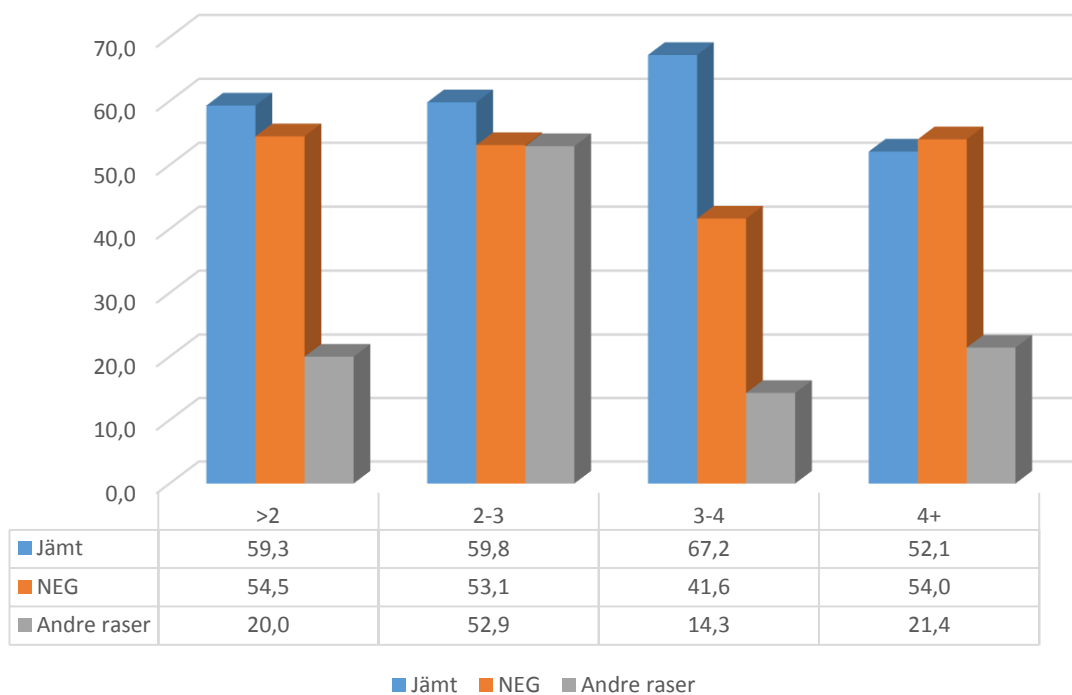
Antall starter fordelt på alder ved prøvestart NEG



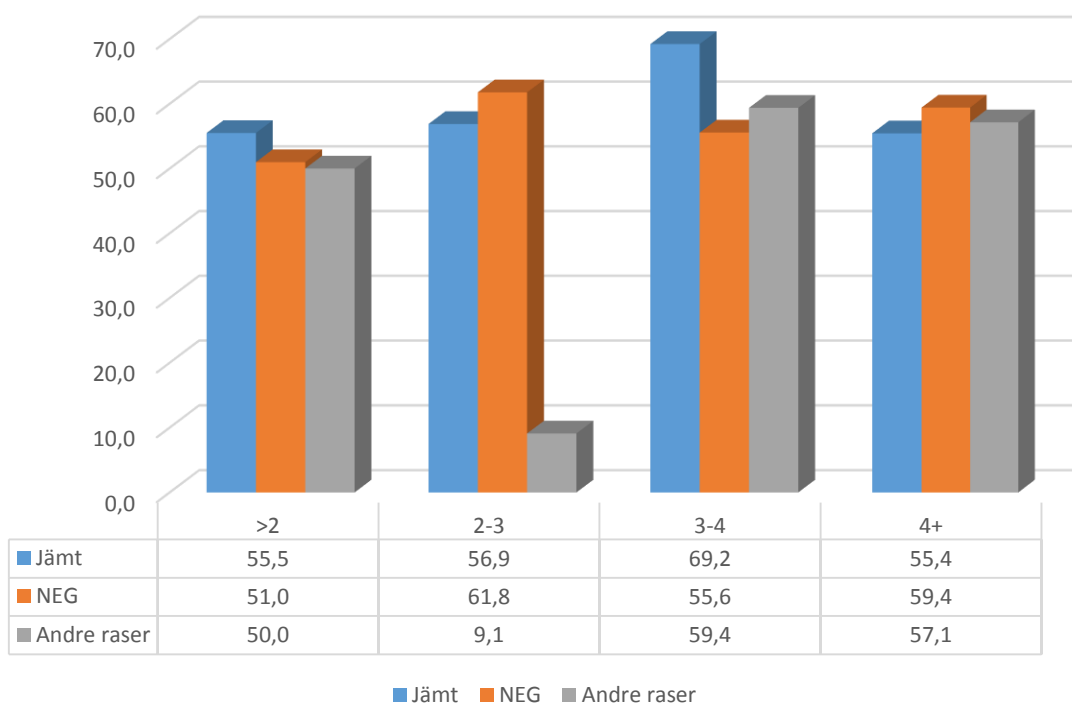
Antall starter fordelt på alder ved prøvestart Andre raser



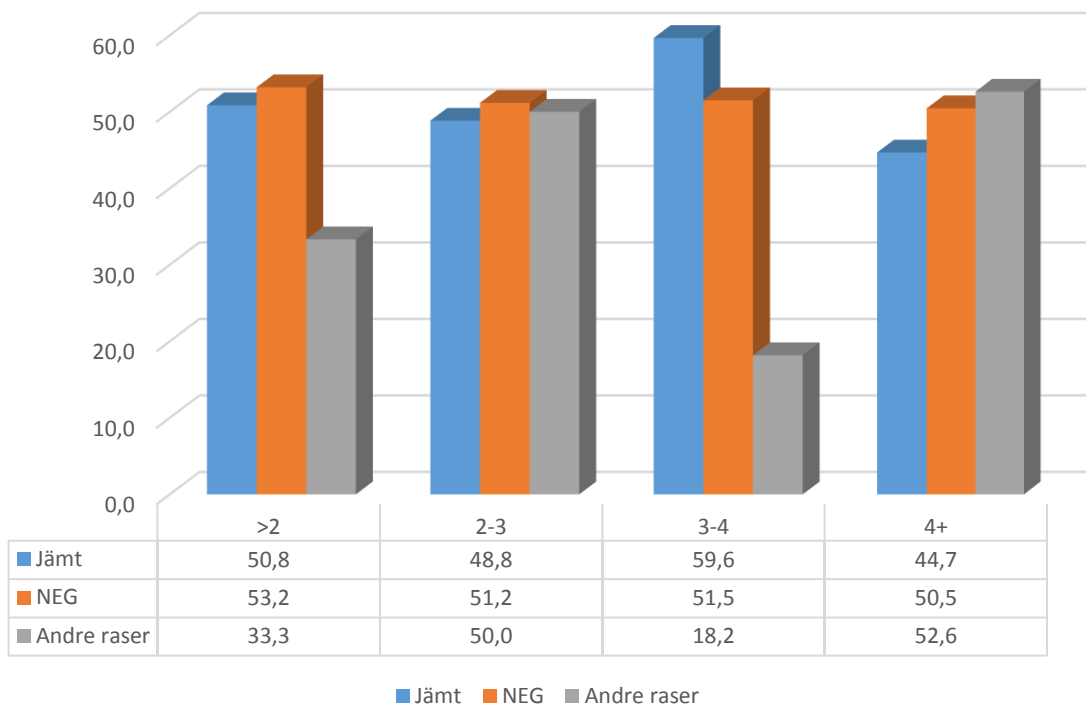
2013-Andel 1. premier av totalt startende fordelt på alder.



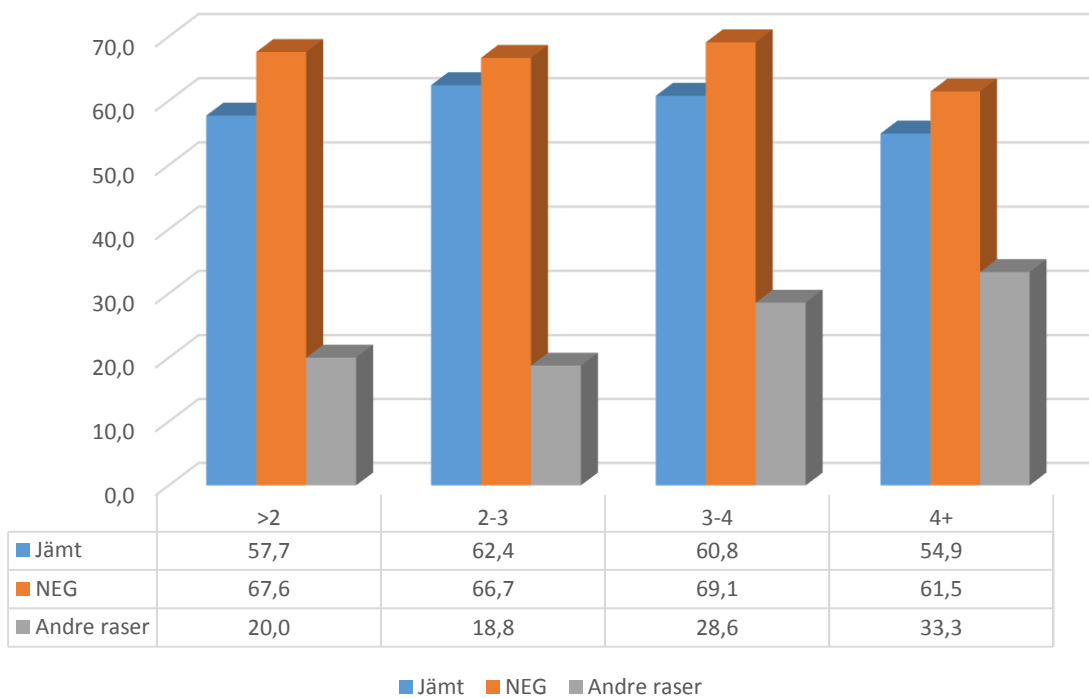
2014- Andel 1.premier i % av totalt startede fordelt på alder



2015-Andel 1.premier i % av totalt statende fordelt på alder



2016-Andel 1.premier i % av totalt statende fordelt på alder



% 1.premie på startende hunder under 2 år

